

## Shared Pathways

VicTrack is the custodian of strategic rail corridor assets across metropolitan Melbourne and provincial Victoria. It is responsible for protecting and managing these assets, whilst providing commercial, social and environmental benefits to the Victorian public.

Over the past 10 years significant investment has been made in developing shared bicycle / pedestrian pathways across metropolitan Melbourne and provincial Victoria involving rail corridor land managed by VicTrack.

VicTrack is committed to supporting the development and promotion of environmentally friendly, healthier travel choices for all Victorians.

The Victorian Government provides a number of grant programs, including the Department of Infrastructure's 'Local Access and Mobility Program'. Many Councils implement their own shared pathway programs, which may rely on VicTrack land.

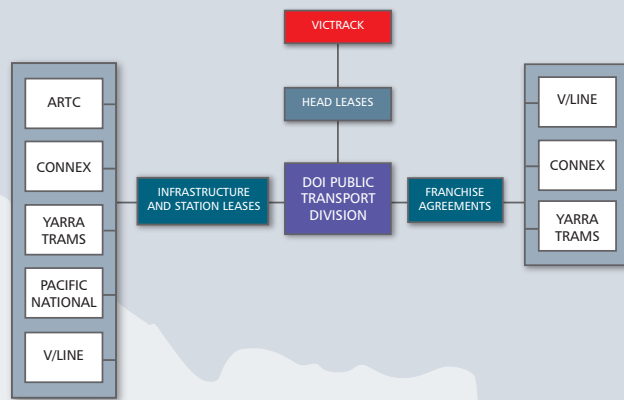
### VicTrack contact details:

VicTrack  
 Property Group  
 Services and Franchising Department  
 Level 10 / 595 Collins Street  
 MELBOURNE VIC 3000  
 GPO BOX 1681  
 MELBOURNE VIC 3001

Phone: (03) 9619 4057  
 Facsimile: (03) 9619 4076

DOI/2857/06

## VicTrack – Shared Pathways



## Application process for Councils

VicTrack has a set of guidelines and a formal process in order to both facilitate and co-ordinate the delivery of shared pathways for Councils and the Victorian community.

Prior to lodging an application for a grant or proposing a project, VicTrack recommends that Councils contact VicTrack outlining the indicative pathway (if the route impacts on railway reserve) and gain in-principle agreement.

This pre-approval process is necessary as there are numerous stakeholder organisations conducting varying degrees of rail activities in the management of railway corridors. In turn there are also numerous activities being undertaken to continually improve the transport network infrastructure. This consultation, as well as identifying any major risk issues, increases probability of success of grant applications and approval for proposed projects.

Once in-principle agreement is granted by VicTrack, Councils are then able to submit their formal applications for assessment and submit to government for funding of their project.

The adjacent flow chart sets out the necessary process.



## SHARED PATHWAYS ALONG VICTRACK RAIL RESERVE

